

Kinver Dual Grammar School

*Public Endowed School for Boys and Girls, founded 1511,
situated in high, healthy position, on sandy soil,
3 minutes' walk from Kinver Terminus.*

Thorough preparation for University and Professional
Examinations. Chemical Laboratory, Cricket
and Football Field, Croquet and Tennis Lawns.
BOARDERS received in Head-Master's House.
Fees moderate and inclusive. Prospectus, Terms,
etc., from Rev. C. H. COLE, B.A., Head Master.

Birmingham & District Tramways.

GUIDE TO KINVER.

To people on pleasure bent, Kinver is well worth a visit. It is now easy of access owing to the network of Tramways, particulars of which will be found on another page.

One of the most charming features of a visit to Kinver is a ride on the "Kinver Light Railway," which starts at the Fish Inn, Amblecote, and proceeds through Wollaston, past the ancient Hostelry, the "Stewponney," so graphically described in Baring Gould's novel, "Bladys of the Stewponney" and from there direct through beautiful country to the old-world village which nestles under the Edge.

The name of "Kinver," or "Kinfare," is accepted as a corruption of the Anglo-Saxon word "Cynefare," which means literally "The King's Highway."

This is supported by the fact that in several ancient Charters mention is made of Cuthred who was King of the West Saxons in the middle of the Eighth Century, and who evidently hunted in this district.

He had a royal residence or lodge adjacent to Kinver Forest, situate on what is now known as Castle Hill or Baron Hill, in the Manor of Wolverley, while half a mile away is an old homestead called Kingsford, which is mentioned in the same Charter.

To turn to more recent history, Kinver, by its Hyde Works, now altogether disappeared, was in the beginning of the Sixteenth Century, one of the homes of the iron industry in this country; it was before the advent of Railways, and at one time a railway was projected which would have tapped Kinver, and touched Cookley and Kidderminster. Had this scheme been brought about, there seems little doubt that the Black Country of to-day might easily have had for its centre this beautiful village of Kinver. It was here, in 1659, the first process for the splitting of iron was brought into use in England. Richard Foley was responsible for the introduction. He visited Sweden and learned from the Swedes the secret of splitting strip for the purpose of nail-making, and also learned the art of rolling, which he observed in the Swedish Iron Works in the disguise of a fiddler. He brought these processes back to England and put them into operation at Kinver. He found, however, that he had not properly mastered the art, and returned to Sweden in his old disguise and further studied their processes. Success crowned his effort and brought prosperity to this centre of industry.

The quaint old Inn, the "White Hart," in the centre of the village, is a typical country house, and the village itself is beautifully picturesque, and repays one for a quiet ramble through the streets and byways.

Numerous walks abound, and the following are recommended as being the most interesting:—

TEAS A SPECIALITY.

PUBLIC & PRIVATE ROOMS.
Small Parties Catered for.

Mrs. TIBBETTS,
Bank House, KINVER.

CYCLISTS Catered for.

Also BATH ROOM,
Hot and Cold Water.

ILLUSTRATED GUIDE TO KINVER.

Carrington's Cafe Royal,

Pavilions seating over
300. Large & Small
Parties Catered for.

Adjoining **KINVER EDGE.**

LUNCHEONS, DINNERS, TEAS. TERMS MODERATE.

Apply, (Mrs.) **E. CARRINGTON.**

WALK NO. 1.

Nannie's Rock and the Pine Woods—4 miles.

A start should be made from the White Hart and then up Stony Lane straight on until opposite Holy Austin Rock. Here will be seen a near approach to the Troglodites of old, as one finds houses hewn out in the solid rock, inhabited by interesting villagers. They stand in a majestic position with Kinver Edge towering above them.

Leaving the Rock Houses and skirting the bottom of the Edge, the walk takes us through bracken covered and well wooded country which delights the eye. The prospect is pleasing at every Season of the year. The early tints of Spring, the full bloom of Summer, and the deepening colour of Autumn, fill the nature lover with rapture, in fact it is often said that the scenery at this point is unsurpassed by anything in the British Isles.

The chief places of interest are the Pine Woods and Nannie's Rock, and between the Pine Woods and the base of the Ridge we see in front of us "Crows Rock," where we drop across our present-day type of



Holy Austin Rock.

George & Dragon, High St., KINVER.

Bache's Noted Home-Brewed Ales.

Wines, Spirits & Cigars of the Best Quality.

Good Stabling
Accommodation

Proprietress--

Mrs. E. M. TIVNANN.

Dinners & Teas
Provided.

W. H. WARRILOW,Celebrated
for**BEST VALUE in HIGH CLASS FOOTWEAR**
AT POPULAR PRICES.**39 & 40, High Street, STOURBRIDGE,****REPAIRS a Speciality.***WALK No. 1—continued.*

Troglodites again. Passing along this rock we see in the distance a monument which was erected some years ago to the memory of the celebrated Puritan, Richard Baxter, who was contemporary with the Richard Foley, of iron industry fame. The walk is delightful, and the tourist experiences that charm of walking upon heather, which for some reason affords an additional pleasure to all lovers of nature. The return should be made by the same road until just after passing "Crows' Rock," when a smart climb to the right brings one to the top of Kinver Edge. From the attitude attained, a good view can be obtained of the Cleve Hills, the Malvern Hills, and the Wrekin, whilst far away to the right can be seen the town of Kidderminster, the whole presenting a panorama difficult to equal anywhere. We make our descent by way of the one time Edge View Hotel, and soon get back again to Kinver Village, where one may find entertainment and refreshment to suit every taste.



Kinver Edge.

ALFRED HILL & Co.,**HIGH-CLASS TAILORS and HABIT MAKERS, BREECHES
SPECIALISTS, LADIES' TAILORS & COSTUMIERS.****100, High Street, STOURBRIDGE.***Newest Patterns. Accuracy of Fit & Excellent Finish to all Garments. Best
work only. Silver Medallist & Diplomee London Exhibition of British Tailoring*

DICK WHITTINGTON INN. (A.D. 1503).

ALES, WINES, SPIRITS, AND CIGARS. LUNCHEONS, DINNERS, TEAS.

GOOD ACCOMMODATION FOR CYCLISTS.

PARTIES CATERED FOR.

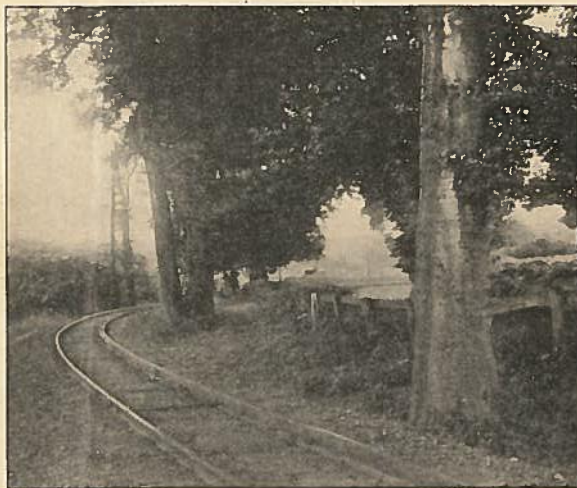
E. PAGE,

BOWLING GREEN AND PLEASURE GARDENS.

Proprietor**WALK NO. 2***Gibraltar Rock and Whittington Inn—
2½ miles.*

Starting from the Terminus of the Kinver Light Railway, immediately on getting to the public road, which is adjacent, we turn to the left, passing over the Canal Bridge and taking the first turning to the right. From the Terminus itself the rock above-mentioned may be seen, and will give one some idea as to the direction in which to go. After turning to the right, a mere path leads past the Rock, parts of which are inhabited, whilst a little further on the walk takes us through some beautiful woods, where in the Spring a carpet of blue bells are to be seen, whilst a wealth of foliage forms a grateful shade on a hot summer's day. After leaving the wood a walk of two or three minutes brings us to one of the oldest hostleries in the country, the "Whittington Inn," an example of Early English architecture which is well worthy of inspection.

The Church on the adjacent hill is both quaint and interesting, and the sight from



Kinver Light Railway.

CROWN HOTEL. Proprietor, J. S. WRIGLEY, Kinver.

HOME BREWED ALES, WINES and SPIRITS of the BEST QUALITIES. ACCOMMODATION for LARGE PARTIES.

Note—Opening of NEW BOWLING GREEN. Try our Ales, all Brewed on the premises.

— GOOD STABLING —

BROCKS For CYCLES, Market St., Stourbridge

Gramophones and Accessories,
Agents for B.S.A., Rudge-Whitworth, Imperial, Centaur, New Hudson Cycles and Motors.

WALK No. 2—continued.

the churchyard is a very fine one, a splendid view of Kinver Village being obtained. The village seems to lie almost directly at one's feet, whilst in the distance the River Stour may be seen winding its way through the valley below, and a delightful view of a long stretch of the Kinver Light railway is obtained, the cars looking like children's toys on a miniature railway. A picturesque descent from Kinver Churchyard brings one back again to Kinver Village.

WALK NO. 3. *Enville—5 miles.*

Starting from High Street, Kinver, the walk to Enville is almost a straight road, but the many interesting sights and picturesque views which can be obtained en route will repay one for the energy spent in reaching this old world village. When the grounds of Enville Hall, the residence of the Countess of Stamford, are open, a pleasant hour or two can be spent viewing the beautiful gardens, etc. The village is also not without interest, the Church being an ancient structure of Early Norman period, where one may inspect the tombs of the dead Earls of Stamford. Refreshments may be procured at the old-fashioned "Cat" Hotel. The return journey can be made the same way or by the route across the Common mentioned in Walk No. 4.

WALK NO. 4. *Enville by another route across the Common—5½ miles.*

In order to make a start by the route across the Common, one has to return on the Kinver Light Railway as far as the Stewponey Hotel, and here a pause should be made to inspect this interesting old place, at the back of which a beautiful bowling green is provided for the benefit of customers, whilst the house is well worth inspection, especially the oak chamber, where splendid examples of the carver's art are on view.

From the Stewponey the road is taken up Stourton Hill, passing Stourton Castle, which is another place of interest in this quaint and historic country. This was the birthplace of Cardinal Pole, and it is supposed that it at one time formed a domicile for King John. It is apparent from the Records that King John visited the Kinver Forest, which was a Royal domain, to hunt.

From Stourton we proceed up the hill keeping on the main road until arriving at the "Fox," from which point we travel across the Common into Enville Village, returning by the same route or that mentioned in Walk No. 3.

CROSS INN, KINVER,

2 minutes from tram.

HANSON'S Ales, Wines and Spirits and Cigars of the Finest Quality. Dinners and Teas Provided.
 Good Stabling and Motor Accommodation. PROPRIETOR, **T. FRADGLEY.**

Compa Cottage Holiday Home and Tea Gardens.

Accommodation for Large or Small Parties; Terms Moderate. Apartments with Board from 15/- to £1 per week. Week-ends from 3/- Agent for the Cycle Touring Club; covered accommodation for 200.

TRY OUR NINEPENNY TEAS.
G. MARTINDALE, Proprietor.

WALK NO. 5.

Gothersley—4 miles.

The tram should be taken to "The Stewpony" as in Walk 4, and then one can take one of two routes, either by the Canal side or by the Road. The latter forms one of the most delightful walks in the district, the whole of the distance being covered by well-wooded country which affords welcome shade, whilst every now and then a charming prospect is afforded by a glimpse of many old-time English homesteads, situated among rustic scenery and interspersed here and there with various brooklets.

Towards the end of the journey will be found a one-time seat of industry known as "Green's Forge," and hard by refreshment can be obtained at the quaint old Hostelry, the "Navigation," which vies with the Whittington Inn, previously mentioned in point of age.

The return journey may be made by the Canal side, and this is recommended, as the walk is extremely picturesque and interesting.

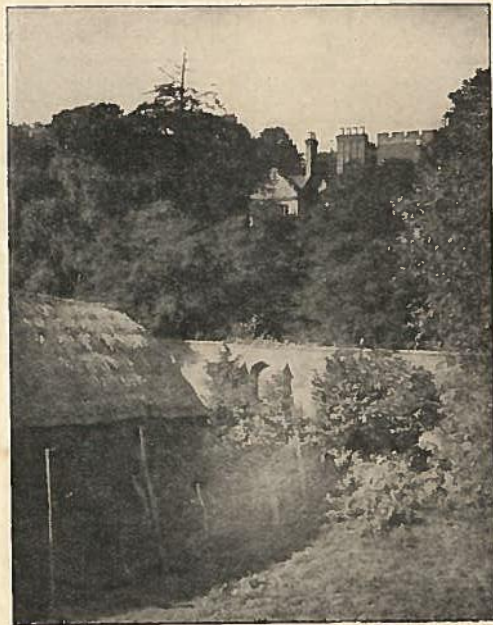
The scenery is equally charming, and if required, the walk can be extended when arriving back at the "Navigation" by a ramble across Highgate Common, which is a large expanse of bracken and verdure-covered country, abounding in animal and bird life.

THOMPSON Electrical Light & Power Engineers

AND

Private Installations, Bells, Telephones,
and Works Equipment.

PASFIELD, 20, High St., Stourbridge.



Stourton Castle.

**SAUNDERS and
BOWKLEY, Ltd.,**

**IRONMONGERS and IMPLEMENT-MAKERS,
STOURBRIDGE.**

Established 60 Years.

Telephone No. 2.

SUMMER TIME TABLE**DUDLEY STATION and FISH INN for KINVER.****WEEK DAYS**

Leave Dudley Station at 5.15 a.m., and
every 15 minutes until 1 p.m., then every
8 and 10 minutes until 8.30 p.m., then every
15 minutes until 10.45 p.m.

Leave Fish Inn at 5.30 a.m., and every 15
minutes until 1.5 p.m., then every 8 and 10
minutes until 8.30 p.m., then every fifteen
minutes until 10.45 a.m.

SATURDAYS

Leave Dudley Station at 5.15 a.m., and
every fifteen minutes until 8.20 a.m., then
every ten minutes until 1.0 p.m., then every
six and seven minutes until 10.50 p.m.

Leave Fish Inn at 5.30 a.m., and every
fifteen minutes until 8.20 a.m., then every
ten minutes until 1.5 p.m., then every 6
and seven minutes until 10.50 p.m.

SUNDAYS

Leave Dudley Station at 10.0 a.m. and
every 15 minutes until 1.0 p.m., then every
8 minutes until 10.20 p.m.

Leave Fish Inn at 10.3 a.m., and every 15
minutes until 1.20 p.m., then every 8 minutes
until 10.30 p.m.

Dudley Timings.

BOATING on the RIVER STOUR, KINVER.
VISITORS TO KINVER should not miss the opportunity of a Trip on the River which winds its way amidst the
most beautiful and picturesque scenery. Pleasure Boats for Hire by the Hour.
Proprietor: JOHN T. TIMMINGS, KINVER MILLS, Near STOURBRIDGE.

**SMART & UP-TO-DATE.**Can always be
seen at

H. E. HASKEW'S, STOURBRIDGE.
CALICOES, SHEETS, BLANKETS, QUILTS, &c., at KEENEST PRICES.

SUMMER TIME TABLE.**FISH INN and KINVER.**

From FISH INN To KINVER. Week Days. To FISH INN.

6.0 a.m.	5.30 a.m.
7.0 "	6.30 "
8.0 "	7.25 "
8.55 "	8.30 "
9.45 "	9.20 "
10.35 "	10.10 "
11.25 "	11.0 "
12.15 p.m.	11.50 "
1.5 "	12.40 p.m.
1.30 "	1.30 "
	1.55 "
and every 25 minutes	at 1.25 p.m.
until	until
8.35 p.m.	8.0 p.m.
9.25 "	9.50 "
10.15 "	10.40 "
11.5 "	

Sundays.

Leave Fish Inn for KINVER at 9.25 a.m.
and every 25 minutes until 9.30 p.m.,
then 10.0 and 10.30 p.m.
Leave KINVER for Fish Inn at 9.0 a.m.
and every 25 minutes until 10.0 p.m.

Wait at R M II P r T r m n u .

When Visiting **KINVER** don't forget to give
FINEST HOME-BREWED ALES in KINVER.

HORSE & WAGON FOR HIRE.

GOOD FISHING

OLD BEN HADLEY a call at
The Vine Inn,

Me t r m Train Termin

RS and
EY, Ltd.,

IRONWONGERS and IMPLEMENT MAKERS.
STOURBRIDGE.

Established 60 Years.

Telephone No. 2.

SUMMER TIME TABLE

DUDLEY STATION and FISH INN for KINVER.

WEEK DAYS:

Leave Dudley Station at 5.15 a.m., and every 15 minutes until 1 p.m., then every 8 and 10 minutes until 8.30 p.m., then every 15 minutes until 10.45 p.m.

Leave Fish Inn at 5.30 a.m., and every 15 minutes until 1.5 p.m., then every 8 and 10 minutes until 8.30 p.m., then every fifteen minutes until 10.50 p.m.

SATURDAYS.

Leave Dudley Station at 5.15 a.m., and every fifteen minutes until 8.20 a.m., then every ten minutes until 1.0 p.m., then every six and seven minutes until 10.50 p.m.

Leave Fish Inn at 5.30 a.m., and every fifteen minutes until 8.20 a.m., then every ten minutes until 1.5 p.m., then every six and seven minutes until 10.50 p.m.

SUNDAYS.

LEAVE DUDLEY STATION at 10.0 a.m., and every 15 minutes until 1.0 p.m., then every 8 minutes until 10.20 p.m.

LEAVE FISH INN, at 10.5 a.m., and every 15 minutes until 1.20 p.m., then every 8 minutes until 10.30 p.m.

Dudley 1 minute.

ATING on the RIVER STOUR, KINVER.

KINVER would not miss the opportunity of a Trip on the River which winds its way amidst the beautiful and picturesque scenery. Pleasure Boats for Hire by the Hour.

Proprietor: JOHN T. TIMMINGS, KINVER MILLS, Near STOURBRIDGE.

SMART & UP-TO-DATE. BLOUSES, JACKETS, DRESSES and DRESS SKIRTS,

Can always be seen at

H. E. HASKEW'S, STOURBRIDGE.

CALICOES, SHEETS, BLANKETS, QUILTS, &c., at KEENEST PRICES.

SUMMER TIME TABLE

FISH INN and KINVER.

FROM FISH INN TO KINVER. Week Days.

6.0 a.m.
7.0 "
8.0 "
8.55 "
9.45 "
10.35 "
11.25 "
12.15 p.m.
1.5 "
1.57 "

FROM KINVER TO FISH INN.

5.30 a.m.
6.30 "
7.25 "
8.50 "
9.20 "
10.10 "
11.0 "
11.50 "
12.40 p.m.
1.30 "
1.55 "

Leave Fish Inn for Kinver at 10.0 a.m., and every 25 minutes until 1.20 p.m., then 10.0 and 10.30 p.m.

Leave KINVER for Fish Inn at 9.0 a.m., and every 25 minutes until 10.0 p.m.

When Visiting KINVER don't forget to give
FINEST HOME-BREWED ALES in KINVER.

HORSE & WAGON FOR HIRE.

OLD BEN HADLEY a call at
The Vine Inn,

GOOD FISHING IN COUNTRY. Meet from Tram Terminus.



Everything at Town Price
ESTABLISHED

ARNOLD & HARRISON
GROCERS, Provision Dealers,
Bakers, & Confectioners.

Opposite Y. O. & N. W. 1st to 10th High St., KINVER.
Noted for Special Blends of Tea, Colonial Dairy Butter, Cheese, Fine
Breakfast Bacon & Ham, Biscuits, Potted Meats & Pickles.

WALK No. 6.

Cookley & Wolverley 6 miles.

This is the longest walk of all, but by going one way and coming back another we find it one of the most interesting. Taking the road up Church Hill we proceed as far as the Madderminster Road, where we branch off, leaving the Church on our right. Continuing our way along the main road we cross the Canal and soon arrive at the picturesque little village of Cookley. An hour or so spent in this quaint old spot will prove a very pleasant pastime, and with members that as late as last century Cookley was a little manufacturing town with a world-wide reputation, one wonders at the change that has taken place. Here and there chimney stacks can be seen and several dismantled works where the iron rolling and tinplate manufacture used to be carried on. At the bottom of the village we find a pretty spot known locally as Pigeon Hill, where a pleasant ramble can be enjoyed, while if we take the trouble to climb the hill we obtain a very fine view of the country for miles around. Adjacent to the main road, at the foot of this hill is a quaint block of building locally known as "Blue Ball," a relic of bygone coaching days, then an important hostelry.

CAR & HORSES INN, WINES AND SPIRITS
of the best quality.

HOME-BREWED ALES a Specialty.

Mrs. E. PRICE, the Oldest Licensee in KINVER.

Ye Olde White Hartle Note, HIGH STREET, KINVER
ALES, WINES, SPIRITS AND CIGARS.

LUNCHEONS, DINNER, TEAS, SPACIOUS DRINKING ROOMS,
BILLIARDS, BOWLING GREEN, PLEASURE GARDENS.

R. M. NEALE, Proprietor.

WALK No. 6 continued.

Several other spots in and around Cookley are well worth visiting, for instance, the Hammer Rock, half-way between Cookley and Causall, the Sleepy Hill, the Island Rock, Hay Bridge, and the Kissing Gate opposite the Blacksmith's forge, while the little hamlets of Austcliffe and Causall afford many picturesque views and illustrate the natural beauties of the district. The latter village has recently become very popular as a residential spot, owing to its close proximity to Kinver and Church Hill, and a week-end spent there will afford from a health point of view as pleasant a journey to the South as can be made from Birmingham. The miniature aqueduct which spans the canal, is of very great interest, not only because it is a part of Birmingham's great Water Supply, but owing to the fact that it is the only instance of its kind in the country, and is considered a monument of scientific engineering. If we continue our walk along the Canal we very soon reach Wolverley, which is a fine ancient town, a large handsome park at the top of which is the Parish Church spire. Near the Church



Rock Dwellings en route to Wolverley.

JUBILEE HOUSE, HIGH STREET. CHAS. GREY of (Harborne, Birmingham)

TEA ROOMS & GARDENS. Lovely View of Church and Cliff. Select Parties and Week-Ends a Specialty. Very Select Rooms for Boarders. Good Accommodation for Motors & Cycles. Terms Moderate. Few minutes from Tram Terminus.

at Town Price 187 THE KINVER TEA STORES.

D & HARRISON, GROCERS, Provision Dealers, Bakers, Confectioners. The Y O de W le Ha le Hotel, High St., KINVER. Local Blends of Tea. Choice Dairy Butters, Cheeses. Fine Ice Creams & Ham. - Biscuits, Potted Meats & Fish.

WALK NO. 6.

Cookley & Wolverley 6 miles.

the longest walk of all, but by going one way back another we find it one of the most interesting. Taking the road up Church Hill we proceed far as the Kidderminster Road, where we leave the Church on our right. Continuing our way along the main road we cross the bridge and soon arrive at the picturesque little village of Cookley. An hour or so spent in this quaint old spot is a very pleasant pastime, and when one returns that as late as last century Cookley was a busy manufacturing town with a world wide reputation, and at the change that has taken place. Here the chimney stacks can be seen and several distilleries where the iron rolling and tinning are used to be carried on. At the bottom of the village we find a pretty spot known locally as the "Hill," where a pleasant ramble can be enjoyed. We take the trouble to climb the hill we get a very fine view of the country for miles around. Adjacent to the main road, at the foot of the hill, is a quaint block of buildings locally known as "The Ball," a relic of bygone coaching days, and an important Hostelry.

HORSES INN, WINES AND SPIRITS of the best quality.

HOME-BREWED ALES a Speciality.

PRICE, the Oldest Licensee in KINVER.

Rock Houses

The Olde White Hartle Hotel, HIGH STREET, KINVER. ALES, WINES, SPIRITS AND CIGARS.

LUNCHEONS, DINNERS, TEAS. SPACIOUS DINING ROOMS. BILLIARDS. BOWLING GREEN. PLEASURE GARDENS.

R. M. NEALE, Proprietor.

WALK No. 6 continued

Several other spots in and around Cookley are well worth visiting, for instance, the Hanging Rock, half-way between Cookley and Causall, the Sleepy Hill, the Island Pool, Hay Bridge, and the Kissing Gate opposite the Blacksmith's forge. While the little hamlets of Astone and Causall provide many picturesque views and illustrate the natural beauties of the district. The latter village has recently become very popular as a residential spot owing to its close proximity to Kidderminster, Churchill, and a well-served place. The road from a health resort of 17 miles is a long and tiring journey, but the 200 yards from Birmingham to the immediate neighbourhood of the village is of great interest, not only because it is the part of Birmingham which is the most picturesque, but also because it is the only bridge across the river. The view is considered a masterpiece of scenic art. If we continue our walk along the Canal, we very soon reach Wolverley, which is built underneath a large sandstone rock at the top of which the Parish Church stands. Near the Church



Rock Dwellings en route to Wolverley.

JUBILEE HOUSE, HIGH STREET. CHAS. GREY of (Harborne, Birmingham)

TEA ROOMS & GARDENS. Lovely View of Church and Cliff. Select Parties and Week-Ends a Speciality. ☞ Very Select Rooms for Boarders. Good Accommodation for Motors & Cycles. Terms Moderate. Few minutes from Tram Terminus.

OLD PLOUGH INN, KINVER.

(Nearest Fully Licensed House to Kinver Edge).

CELEBRATED HOME-BREWED ALES. WINES AND SPIRITS, Special Brands. DINNERS & TEAS PROVIDED. GOOD STABLING. **Proprietor - J. GATTI.**



Further View of Rock Dwellings.

WALK No. 6—continued

is situated the Old Pound with its stalls cut out of the solid rock, while close by is the old Queen's Head Hotel, in front of which the "Stocks" used to be fixed. There are numerous walks in this vicinity, and if one wishes to delve into ancient history, many interesting stories can be heard, viz., the legend of the Knight of Wolverley, the Story of King Charles II. Flight after the Battle of Worcester, and others dating from Anglo-Saxon days to the present century, while anyone who wishes can take a walk to Castle Hill and be shown traces of the old Roman road and the Castle Ruins, now used as a Stable. The return journey should be made by the Blakeshall Road, along which about half-a-mile from the village the Cave Dwellings of Drakelow can be plainly seen, situated on a terrace overlooking the road. Further on we notice Blakeshall Common which has often been called "Little Switzerland," owing to its wild rocky aspect. Further on we come to Kinver Edge, described in Walk No. 1, and another descent brings us back to the village to the point from which we started.

Fish Inn, Coalbournbrook.

PROPRIETOR

Terminus for Kinver Light Railway.

DON'T FORGET TO CALL.
Noted Burton Ales & Stout. Spirits of the Finest Quality.

- - - GEO. DUNCOMBE.

"A MOMENT'S ENJOYMENT IS A MOMENT'S EASE."

FOR BOTH, COME TO THE **TIVOLI, BRIERLEY HILL.** TRAMS STOP AT THE DOOR
WHEN REQUESTED.

WALK NO. 7.

Kingsford Lane—3 miles.

From the High Street, Kinver, we proceed up Envile Road as far as Potter's Cross, and then turn sharply to the left, bringing us to the base of Holy Austin Rock, from which point we keep to the main road until the first turning to the left which brings us to Kingsford Lane. This is one of the most delightful lanes in the whole of the district, the numerous silver birch trees producing a very pleasing effect. The Botanist can here find specimens of all kinds, and to anyone making this a hobby a very instructive and useful time can be spent, while to those who make a study of animal and bird life, there is no better spot in the neighbourhood. Numberless squirrels can be seen at all times skipping from tree to tree in their peculiar, wonderful manner, while birds of every colour and plumage are to be seen and heard in their various haunts and resting-places. This lane has been truly called a "Children's Paradise."



Kingsford Lane.

ALBERT WALKER, "Crown & Anchor," ENVILE ROAD, KINVER. 5 minutes walk from
EXTENSIVE PLEASURE GROUNDS & BOWLING GREEN. Rock Houses. ❖ ❖

DINNERS TEAS, &c., on the Shortest Notice.

WINES & SPIRITS of the Finest Brands.

CHOICE CIGARS.



Silver Birches in Kingsford Lane.

Stewponey & Foley Arms Hotel,

ALES, WINES, SPIRITS & CIGARS. LUNCHEONS,
DINNERS, TEAS. Spacious Dining Rooms. Bowling Green.
Pleasure Grounds. Apply—**I. T. ELWELL, Proprietor.**

WALK No. 7—continued.

Continuing our journey we arrive at the cottages at the top of Kingsford Lane, and a turn to the left takes us to the Pine Woods, the walk through which, apart from being beautiful and picturesque, makes one realize, to the fullest extent, the healthgiving properties of the smell of the pines, while the heather imparts to one a feeling of walking on a springy carpet.

These Woods are very popular, and when one finds that the average ages of the majority of the dwellers in the neighbourhood are beyond the ordinary span, it makes one wish they could transfer their goods and chattels and take up their abode in this charming place where nature prolongs life.

WALK NO. 8.

Compton—4 miles

This pretty little village is reached by taking Walk No. 7 as far as Potter's Cross. Turn up the same lane to the left, and when about half-way along take the path across the fields right into Compton.

White's Tea Arbours & Tea Gardens,

Close to Kinver Edge.
Special Terms for Parties


The Forest, KINVER.

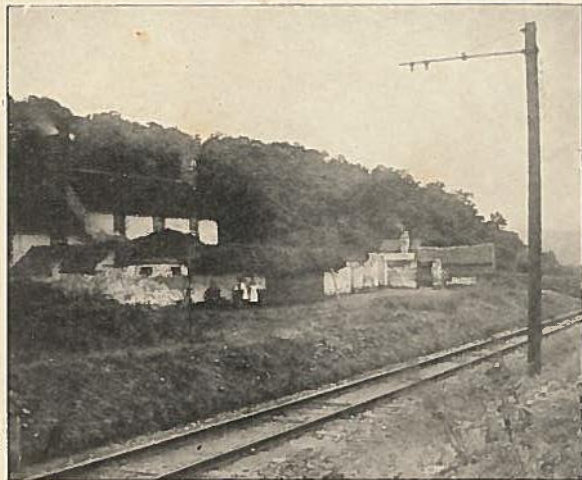
THE ROYAL EXCHANGE, KINVER,

FRANK GRIFFITHS, Proprietor.

(Late of West Bromwich).

Ales, Stout, Wines & Spirits of all Brands. Dinners & Teas a Speciality. Apartments. Good Stabling.

 ALIGHT AT THE HYDE MEADOWS.



Passing the Cottages from Kinver Light Railway.

WALK No. 8—continued.

In the latter part of the year this district is prolific in nuts and wild fruit, and a delightful and profitable afternoon may be spent with a crook-stick for reaching the tall branches and a bag in which to carry the result of one's efforts. There are many ideal spots for a picnic, and as the places around afford little accommodation for refreshment, it is as well to go provided. This is a walk more suited to visitors who are not anxious for a strenuous afternoon's climbing, and can be undertaken by anyone, young or old, as there are numerous places en route where one can rest amid the pleasantest of surroundings, in addition to which the abundance of foliage supplies ample shade from the heat of the sun, even on the hottest day. The return journey should be made the same way, or if time is of no moment, cross roads could be taken to join with Walks No. 3 or 7.



STAG INN Pure Home-Brewed Ales. Wines and Spirits. Cigars of the Finest Quality.

E. I. PARKES, Proprietor.

(One Minute from Tram).

SPECIAL RETURN TICKETS TO KINVER

Are Issued from May 1st, to October 1st. from the following Towns at Cheap Rates,

RATES.—From	DOUBLE JOURNEY		RATES.—From	DOUBLE JOURNEY.	
	ADULTS.	Children under 12.		ADULTS.	Children under 12.
BIRMINGHAM (Edmund Street).	1/6	1/-	WEDNESBURY (Dartmouth Arms), <i>via</i> Princes End	1/4	10d.
" (Colmore Row)....	1/6	1/-	OCKER HILL.....	1/3	9d.
WINDMILL LANE	1/5	1/-	PRINCES END.....	1/2	8d.
SMETHWICK (Blue Gates).....	1/4	11d.	TIPTON (Five Ways).....	1/1	8d.
" (Spon Lane).....	1/2	10d.	BRADLEY or WILLENHALL	1/7	1/1
OLDBURY (Town Hall).....	1/1	9d.	BILSTON TOWN HALL.....	1/6	1/-
HANDSWORTH	1/5	1/-	FIGHTING COCKS.....	1/3	10d.
BEECHES ROAD	1/4	10d.	SEDGLEY.....	1/-	8d.
HILL TOP.....	1/4	10d.	DUDLEY STATION or		
CARTERS GREEN	1/3	9d.	MARKET PLACE.....	10d.	6d.
GREAT BRIDGE (Market Place)	1/2	8d.	BRIERLEY HILL.....	6d.	4d.
DUDLEY PORT.....	1/1	8d.			

Tickets which are not transferable, are issued subject to the Bye-Laws, Rules, and Regulations of the Companies, and the special condition as to Limitation of Liability in case of Accident. On Bank Holidays Special Tickets are neither issued nor available. Passengers change at Dudley and Fish Inn and are requested to see that the Conductor collects a portion of the Ticket over each Section, and issues an Exchange Ticket in lieu. The Return Journey may be made at any time.

By Arrangement with the General Manager Parties of 50 and upwards, may be accommodated in Private Cars.

Passengers returning, who wish to make the connection at Dudley, must leave Kinver not later than 9 p.m. The Committee do not hold themselves responsible for delays.

Power Station, Downing Street,
Smethwick.

Telephone 65 Smethwick,
and 368 Central

BY ORDER.